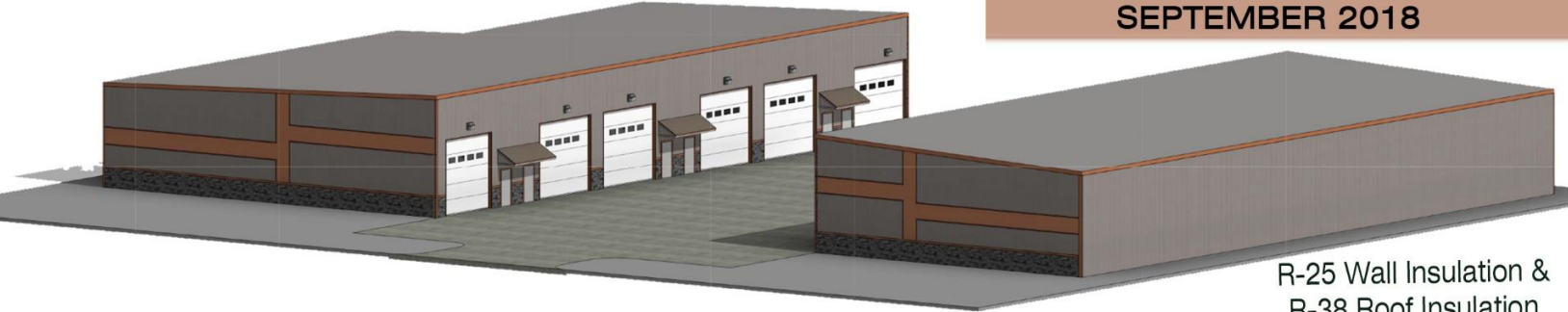


Northfield Warehouses

FOR SALE

LOCATED OFF KING AVE. WEST & BLACK HAWK ST.

ANTICIPATED COMPLETION
SEPTEMBER 2018



R-25 Wall Insulation &
R-38 Roof Insulation
ALL UNITS

UNITS N1-N5

The West building has four units with varying square footages that include:

- Restroom
- Covered entrance
- 14' OH door

UNITS O1-O5

The East building has five units with varying square footages that include:

- Restroom
- Covered entrance
- 14' OH doors

Association dues

.50 cents per square foot each year

Includes:

- Building insurance
- Concrete parking lot maintenance
- Landscape maintenance
- Liability insurance for officers and directors
- Security camera system
- Snow removal
- Water and sewer system maintenance
- Water (Cistern)
- Wifi



DESIGNED AND BUILT BY:



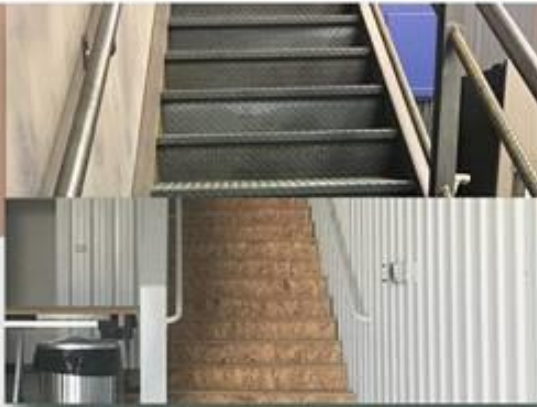
406.839.9151 • eecmt.com • 720 Lohwest Lane, Billings, MT
ENGINEERS • ARCHITECTS • SURVEYORS • BUILDERS



Kelly Metcalf
Owner/Broker
406.671.8163
kelly@eecmt.com

NW

UPGRADE OPTIONS



STAIRS

- Metal Stair
+\$4,800 (PC +\$1,000)
- Metal Stair & Mezz. Railing
+\$9,800 (PC +\$1,400)
- Wood Stair & 42" sloped wall
+\$3,500

WALL FINISH

- Stained Plywood
+\$3/panel SF
- Colored Liner Panel
+\$3/panel SF



FLOORING

- Epoxy Floor w/ flakes & clear coat
+\$3.75/SF
- LVT Flooring w/ Base
+\$4.50/SF

MEZZANINE

Based on size & finish



WINDOWS

- Exterior
+\$500
- Interior
+\$300



BATHROOM

- Shower
+\$1,500
- Metal Wainscot
+\$900



- Cabinets/counter tops
+\$10,000
- Fridge/Microwave
+\$2,000



Cooling Available

DESIGNED AND BUILT BY:

EEC

406.839.9151 • eecmt.com • 720 Lohwest Lane, Billings, MT
ENGINEERS • ARCHITECTS • SURVEYORS • BUILDERS



Kelly Metcalf
Owner/Broker
406.671.8163
kelly@eecmt.com